

COLOR TECHNIQUE ROOT SHADOW



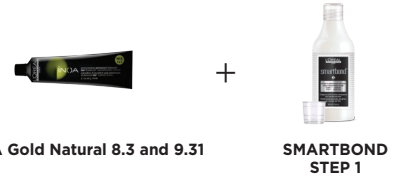
for VIRGIN HAIR

FORMULA 1



On the new growth, apply
INOA 6.23 + 20-vol. +
Smartbond Step 1

FORMULA 2



Alternate wrapped hair strands with different
INOA shades 8.23 + 20-vol. + Smartbond Step 1
& 9.23 + 30-vol. + Smartbond Step 1

for COLORED HAIR

EFFASOL (IF HAIR COLOR IS DARKER THAN LEVEL 6)

FORMULA 1



On the regrowth, apply
INOA 6.23 + 20-vol.
+ Smartbond Step 1

FORMULA 2



Freehand highlight technique
with Blond Studio Platinum Plus
+ 30-vol. + Smartbond Step 1

FORMULA 3

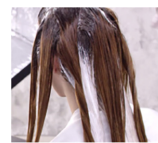


Gloss with DIA Light +
9-vol. + Smartbond Step 1

3 TRIANGLE BALAYAGE



Start at the nape and
create 3 triangle sections.
Balayage each triangle
section with Formula 2.



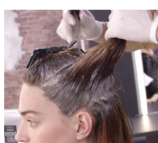
PRO TIP:
Saturate the hair and
Balayage it to the new
growth area to get a soft
result from new growth
to ends.

1 NEW GROWTH COLOR



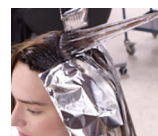
Apply 1-inch
Formula 1 onto the
new growth. Process
for 35 minutes.

2 HAIR SECTIONING



While processing,
create 3 sections
as drawn.

4 3 POINT BALAYAGE



Take diagonal back
sections at the top of the
head and Balayage with
a 3 point application to
create the shadow effect.

5 GLOSS



Rinse. Gloss with Formula 3. Rinse thoroughly and
apply Smartbond Step 2 for 10 minutes. Shampoo
with Serie Expert Vitamino Color A-OX and treat
with Powermix Color.