

COLOR TECHNIQUE TIGER EYE



for VIRGIN HAIR

FORMULA 1



Wrapped highlight technique with INOA 8.31 + 30-vol. + Smartbond Step 1

FORMULA 2



INOA 6.23 + 20-vol. + Smartbond Step 1

for COLORED HAIR

EFFASOL (IF HAIR COLOR IS DARKER THAN LEVEL 6)

FORMULA 1



On the regrowth, apply INOA 5.12 + 20-vol. + Smartbond Step 1

FORMULA 2



Wrapped highlight technique with Multi-Techniques Powder + 30-vol. + Smartbond Step 1

FORMULA 3



Gloss with DIA Light 8.23 + 9-vol. + Smartbond Step 1

1 FRONT HAIRLINE



WITH FORMULA 1, START AT THE HAIRLINE ON THE FRONT WITH VERY THIN STITCHED SECTIONS

PRO TIP: Release the first 1/2 inch of hair to create a soft veil.

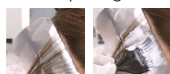


Apply 4 to 6 foils on the facial hairline depending on the quantity of hair.

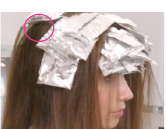
2 SIDES OF THE HEAD



REPEAT ON BOTH SIDES (4-6 FOILS ON EACH SIDE depending on the quantity and the parting of the hair)



3 CROWN OF THE HEAD



FINISH THE CROWN AREA (4-6 FOILS)



PRO TIP: Make sure the stitches are very thin.



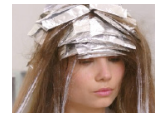
PRO TIP: Saturate the foils with enough product for a lighter result.

4 V-SHAPE BALAYAGE

BALAYAGE THE HAIRLINE TO BRING BRIGHTNESS TO THE COLOR AND MAKE THE FOILED PIECES FLOW TOGETHER WITH THE MID-LENGTHS AND ENDS



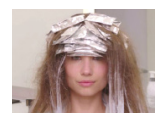
Randomly select a section on the natural fall of the hair from the hairline. Gently backcomb from mid-lengths to regrowth.



Brush upwards to blend the product and create a softer effect. Do the same on both sides of the face with 1 or 2 sections depending on hair thickness.



Take a V-Shape section. Using Formula 2, apply to create more light on the mid-lengths and ends.



Let it process between 15 and 30 minutes.

5 GLOSS

RINSE THOROUGHLY



Gloss with Formula 3. Process up to 10 minutes. Rinse thoroughly.



Apply Smartbond Step 2 for 10 minutes before shampooing. After shampooing, follow with Serie Expert Powermix Color.